

Queen Mary University of London



Our History 1785 - 2022

Established in
1785

London Hospital Medical College
St Bartholomew's Medical College
Westfield College
Queen Mary College

9 Nobel
Prize
winners

Introduction to Queen Mary

- Over 4,400 staff (one-third international).
- 32,000 students (170 nationalities); 4,800 based in China.
- 5 London campuses across East and Central London
- £535m annual income.
- £119m research income.



London's campus university

Whitechapel Royal London Hospital
Barts and The London Faculty of
Medicine and Dentistry

Mile End Campus



Our students

University of London



49%

First into higher education

75%

BAME (black, Asian and minority ethnic)

23%

From households where taxable income is less than £10k

90%

From state schools

42%

Overseas and EU students

Academic structure

Humanities and Social Sciences

- Business and Management
- Economics and Finance
- English and Drama
- Languages Linguistics and Film
- Geography
- History
- Law
- Politics and International Relations



Science and Engineering

- Bioengineering
- Biological and Behavioural Sciences
- Physical and Chemical Sciences
- Electronic Engineering and Computer Science
- Engineering and Materials Science
- Mathematical Sciences



Medicine and Dentistry

- Barts and the London Faculty of Medicine and Dentistry



Faculty of Medicine and Dentistry

University of London

St Bartholomew's Hospital School of Medicine

- *Established 1123*

The (Royal) London Medical College

- *Opened 1785*

St. Bartholomew's Hospital Henry VIII Gate, 1899.
Courtesy of St Bartholomew's Hospital Archives



The Royal London Hospital

Opened 2012

- Officially opened by Queen Elizabeth II
- One of the largest children's hospitals in the UK
- Home to London's Air Ambulance
- Students can undertake their clinical training on-site
- In collaboration with Barts and The London NHS Trust



Size and Shape

University of London

2667

UG students at our
London campuses

1030

PGT students at our
London campuses

447

PGR students

889

Distance Learning
students

233

Transnational Education
students

5266

Total students in FMD

Rankings

The Complete University Guide 2022:

5th in the UK for dentistry (1st in London)
8th in the UK for medicine (1st in London)

Guardian 2021:

6th in the UK for dentistry (1st in London)
11th in the UK for medicine (1st in London)

QS World University Rankings (2020):

Joint 2nd in the world for research citations in medicine (citations per paper)
3rd in the world for research citations in Dentistry (citations per paper)

FMD Institutes

University of London

Barts Cancer Institute

Blizard Institute

Institute of Dentistry

Institute of Health Sciences Education

William Harvey Research Institute

Wolfson Institute of Population Health



Whitechapel



Charterhouse Square

Research Themes

University of London

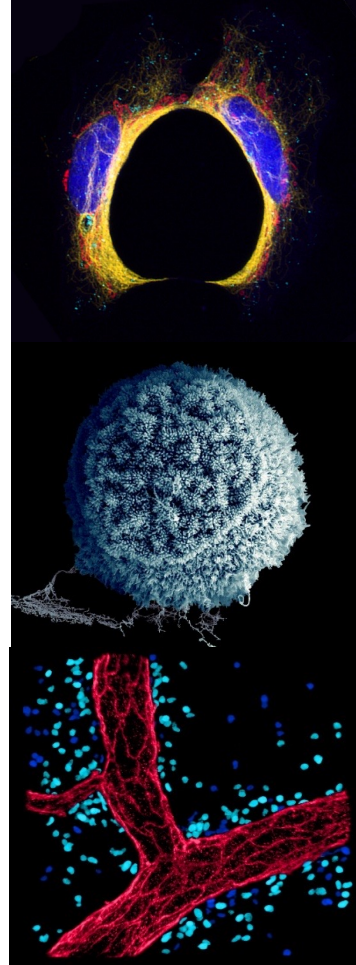
**Cardiovascular
Medicine**

Cancer

**Focused
Themes**

Inflammation

Population Health



Research Themes cont.

University of London

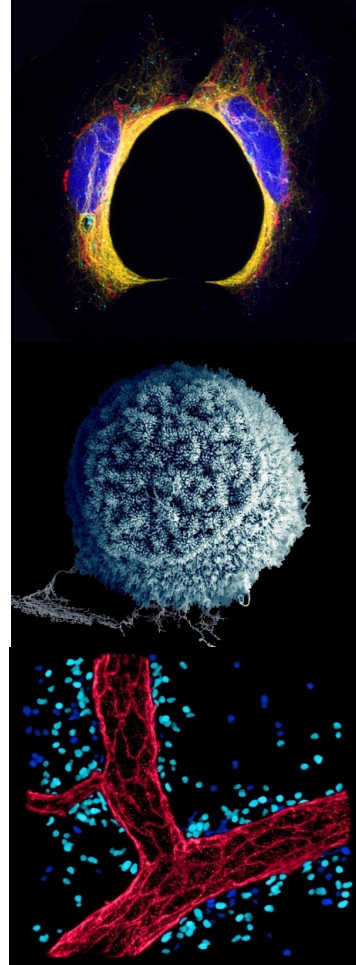
**Digital Health and
Health Data Science**

**Crisis Prevention and
Management**

**Multi-disciplinary
Themes**

**Environment and
Health**

Life-long Health



Research Excellence (REF2021)

Research Excellence Framework 2021

7th in the UK for Clinical Medicine

Impact

100% 3*/4* Public Health & Primary Care papers

100% 3*/4* Allied Health Professions papers

96% 3*/4* Clinical Medicine papers

Outputs

“A large majority of the outputs submitted were noted to be world-leading or internationally excellent in quality. The sub-panel noted world-leading research outputs across most of the subject areas covered in the submission, with particular strengths being seen in the areas of Cardiovascular medicine and Cancer studies”

Environment

“The research environment was judged to be conducive to producing research of world-leading quality and enabling outstanding impact. The sub-panel noted a strong approach to impact, with significant translational research with clinical and industrial engagement, including the establishment of the new Clinical Research Unit, as well as strong collaborations with Genomics England and other high quality industrial partnerships.”

Our Impact 2021

University of London

Focused, rapid interventions for injured patients with major bleeding saves thousands of lives

Professor Karim Brohi and his colleagues have developed new treatment approaches for trauma patients with critical bleeding that have reduced death rates by nearly 30% percent at the Royal London Hospital, one of the busiest major trauma centres in Europe. The damage control resuscitation (DCR) strategy and major haemorrhage protocol (MHP, or 'Code Red') were adopted as national standards by the NHS in 2016.



Our Impact 2021

University of London

Professor Foster leads efforts in England to eliminate Hepatitis C virus

Professor Foster's research has shaped national and international guidelines on hepatitis C treatment and screening – making significant progress in eliminating the virus in the UK and elsewhere.

As a result, the Public Health England HCV annual report for 2020 indicated a 20 per cent and 44 per cent fall in deaths and transplant listings for HCV respectively, and a 95 per cent success rate in 'curing' patients of the virus.

The results of these trials have shaped national and international guidelines on HCV treatment.



Our Impact 2021

University of London

The pinprick that improves cancer diagnosis: rapid blood test brings prostate cancer hope

Queen Mary researchers have discovered a blood test that accurately detects the presence of aggressive prostate cancer - the most common cancer in Western men.

“We were able to detect prostate cancer with the highest level of accuracy ever seen in any biomarker test, which could spare many patients unnecessary biopsies. This could lead to a paradigm shift in the way we diagnose prostate cancer.”

— Professor Yong-Jie Lu, Barts Cancer Institute, Queen Mary University of London



Barts Life Sciences

University of London

Transforming Healthcare in London, the UK and the World

- **Collaboration between QMUL and Barts Health NHS Trust, support by Barts Charity**
 - **Accelerating the latest healthcare innovations from bench to bedside**
1. **Bio-Innovation Centre (drug discovery)**
 2. **WHRI (one of the largest pharmacological institutes in Europe)**
 3. **Centre for Experimental Cancer Medicine (over 120 trials at any one time)**
 4. **Wolfson Institute (translating research into public health strategies to reduce disease and disability)**



Global profile

University of London

6 Regional
Offices –
London, Delhi,
Lahore, KL,
Beijing and
Washington

28,000
students

Campuses
in China,
France and
Malta

162
nationalities
on campus

190,000
alumni
around the
world



Global reputation

University of London

Times Higher Education World University

Rankings: 110 in the world and 13 in the UK (2021) /
110 in the world and 12 in the UK (2020)

QS World Universities: 114 (2021) / 126 (2020)

The Times and Sunday Times Good University Guide recognised Queen Mary as the most inclusive Russell Group University, noting that: *“Queen Mary continues to prove that social inclusion and academic success are not mutually exclusive.”*

Queen Mary was the runner-up for University of the Year in the **Times Good University Guide**.

Queen Mary is consistently ranked in the **top 20 in the world for ‘International Outlook’**



Summer graduation at Queen Mary



MBBS Malta



Queen Mary
University of London

MBBS Malta

University of London

- First intake graduating Summer 2022
- Over 100 students now studying the MBBS in Malta
- Same curricula and award as London-based programme
- Students undertake clinical placements in Gozo and Malta mainland
- Over 20 nationalities
- Healthcare system predicated on NHS



Partnerships

University of London

- Malta Enterprise: campus and hospital complex development
- Teaching faculty
- Gozo General Hospital
- University of Malta
- Government of Malta - plans to establish Malta as a centre of medical excellence in the region, reducing health inequalities



Thank you



Queen Mary
University of London