

STATION
“EMERGENCY MEDICINE”

You are general practice doctor on ward at emergency department.

PATIENT: 37 year old

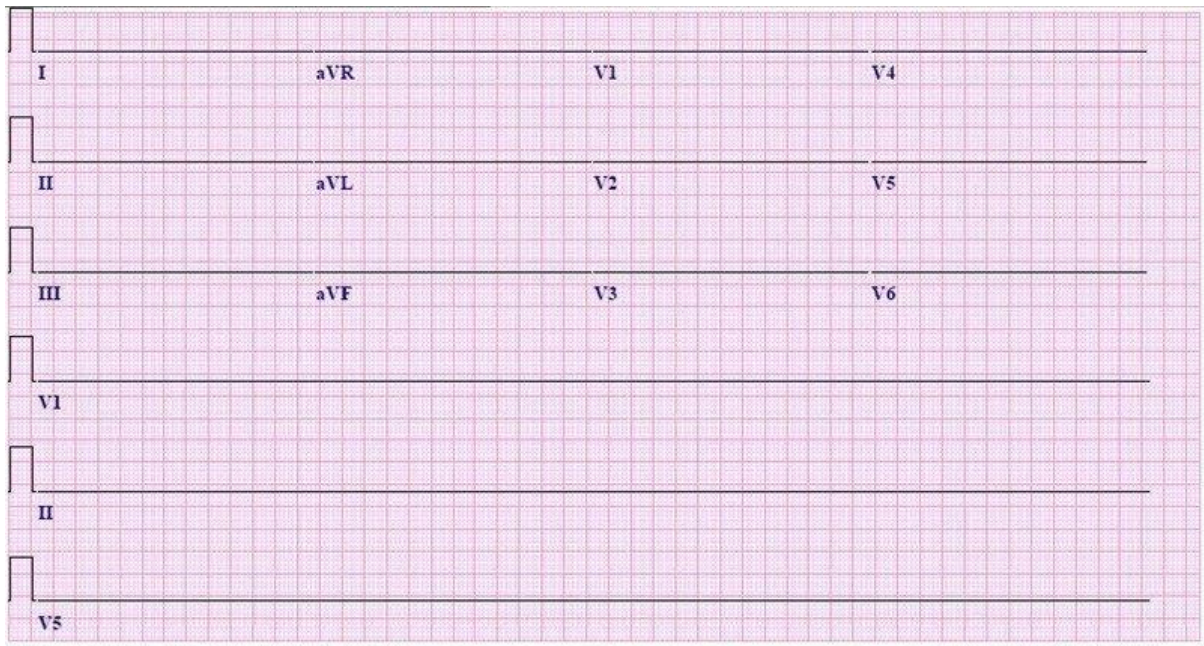
Complains: absent due to absence of consciousness.

He is a known CKD patient and had not received dialysis for 10 days. During the EMS transportation, his mental status was decreased and he was just arrived in the ED resuscitation bed.

HR	BP	Temperature (°C)	O ₂ Sats (RA)	RR
0	0/0	36.6°	79%	absent

Objectives:

1. Diagnose the patient's condition and establish the diagnosis.
2. Provide emergency care due to suitable algorithm for a situation.
3. Say loudly: What disorders by the rule of “4H&4T” may cause this situation?



25mm/s 10mm/mV 40Hz 005C 12SL 254 CID: 30

EID: Unconfirmed EDT: ORDER:

